



TRACK &
ATTACHMENT
SOLUTIONS



V2022-A

PRODUCT CATALOGUS

Slijtdelen voor grondverzetmachines

PRODUCT CATALOG

Wearparts for earthmoving machines



ATTACHMENTS

Our quality is your succes!



GP Equipment BV is een Nederlands bedrijf opgericht in 2007. Wij zijn gespecialiseerd in ontwikkeling, constructie, productie, verkoop en service van uitrustingsstukken voor grondverzetmachines.



GP Equipment BV is a Dutch company founded in 2007. We are specialized in development, construction, production, sales and service of equipment for earth-moving machines.





We produceren voornamelijk de volgende uitrustingsstukken:

- Snelwissels
- Banaanbakken
- Dieplepelbakken
- Slotenbakken
- Puinbakken
- Kantelbakken
- Rooirieken en harken
- Palletvorken
- Dichtschuiven
- Rippers voor graafmachines
- Grippers
- Grachtenbakken
- Verdichtingswielen
- Kettingbakken
- Slijtdelen
- Kopplaten voor sloophammers en scharen



We mainly produce the following equipment and accessories:

- Quick couplers
- Clay spades
- Digging buckets
- Ditch cleaning bucket
- Skeleton buckets
- Tilttable ditch cleaning buckets
- Land rakes
- Pallet forks
- Dozer blades
- Rippers for excavators
- Sorting grabs
- Canal buckets
- Compacter wheels
- Chain buckets
- Wearparts
- Top plates for hydraulic hammers and and shears

Uitrustingsstukken worden geproduceerd voor machines van 0,5 tot 65 ton zoals:

- Mini en midi graafmachines
- Mobiele graafmachines
- Rups graafmachines

Accessories are produced for machine weight categories 0,5 to 65 tons such as:

- Hydraulic wheel excavators
- Mini and medium excavators
- Hydraulic tracked excavators



Voor nagenoeg alle wereldwijde grondverzetmachinemerken



For about all global construction machinery brands

Caterpillar

Komatsu

New Holland

Case

Volvo

Liebherr

Atlas

Neuson

Hitachi

Hyundai

Doosan

Kubota

Yanmar

Takeuchi

Bobcat

Sunward

JCB

Kobelco

Yuchai

Airman

Peljob

Terex

en vele meer
and many more



Our quality is your succes!

SNELWISSELS - QUICK COUPLERS

HCW (hydraulisch / hydraulic)

CW00 | CW05 | CW10 | CW20/30 | CW40 | CW45



*HCW05



*HCW10



*HCW20-40



MCW (mechanisch / mechanical)

CW00 | CW05 | CW10 | CW20/30 | CW40



*MCW05



*MCW10



*MCW20-40



DCW (mechanisch met spindel / mechanical with spindle)

CW00 | CW05 | CW10 | CW20/30 | CW40



*DCW05



*DCW10



*DCW20-40



SACW (semi-automatisch / semi-automatic)

CW00 | CW05

Handel los meegeleverd
lever supplied separately



*SACW05



*SACW05



*SACW05

KOPPELSTUKKEN - HITCHES

MCW (mechanisch / mechanical)

CW00 | CW05 | CW10 | CW20/30 | CW40



*MCW05 - CW00



*MCW05 - CW10



*MCW10 - S40



DCW (mechanisch met spindel / mechanical with spindle)

CW00 | CW05 | CW10 | CW20/30 | CW40



*DCW10 - S40



*DCW05 - CW00



*DCW05 - CW10



HCW (hydraulisch / hydraulic)

CW00 | CW05 | CW10 | CW20/30 | CW40



*HCW05 - CW10



*HCW05 - CW00



*HCW10 - S40



Maatwerk? 🇧🇪

Bel ons gerust!

Customization? 🇬🇧

Feel free to call us!

Our quality is your succes!

KANTELKOPPEN - TILTING COUPLER



*CW05

KK (cilinders)

CW00 | CW05 | CW10 | CW20/30



*CW05 (vast / direct)



*CW10 (vast / direct)

HKK (tilt motor)

CW00 | CW05 | CW10 | CW20/30 | CW40



*CW10



*CW05 (vast / direct)



HKK powered by

rädlinger



BANAANBAKKEN - CLAY SPADES

BBS

CW00 | CW05 | CW10 | CW20/30 | CW40
QT00 | QT05 | QT10 | QT20/30 | QT40



*klasse 15 | CW05



*klasse 50 | CW30



*klasse 30 | QT05



BBST

S30 | S40 | S45 | S50 | S60



*klasse 25 | S40



*klasse 15 | S30



*klasse 45 | S60



SBBS

CW00 | CW05 | CW10 | CW20/30 | CW40 | CW45
QT00 | QT05 | QT10 | QT20/30 | QT40 | QT45
S30 | S40 | S45 | S50 | S60



*klasse 25 | CW05



*klasse 40 | S45



OPTIONS

profielmes | tanden
half arrow profile | teeth



*klasse 50 | CW30



*klasse 30 | QT05



*klasse 20 | S30



*klasse 45 | S60

DIEPLEPELBAKKEN - DIGGING BUCKETS



*klasse 15 | CW05

DBS (DBH = reinforced | DBR = heavy duty)

CW00 | CW05 | CW10 | CW20/30 | CW40 | CW45

QT00 | QT05 | QT10 | QT20/30 | QT40 | QT45



*klasse 50 | CW30



*klasse 25 | QT05



*klasse 25 | S40

DBST

S30 | S40 | S45 | S50 | S60



*klasse 10 | S30



*klasse 45 | S60



*klasse 60 | CW40

SDBS (semi-model)

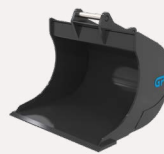
CW00 | CW05 | CW10 | CW20/30 | CW40 | CW45

QT00 | QT05 | QT10 | QT20/30 | QT40 | QT45

S30 | S40 | S45 | S50 | S60



*klasse 50 | S60



*klasse 30 | CW10

OPTIONS

Verstevigde varianten beschikbaar
Heavy duty variations available



*klasse 55 | CW40 ESCO



*CW30 CAT



*klasse 15 | CW05

SLOTENBAKKEN - DITCH CLEANING BUCKET

SBS

CW00 | CW05 | CW10 | CW20/30 | CW40 | CW45

QT00 | QT05 | QT10 | QT20/30 | QT40 | QT45



*klasse 15 | CW05



*klasse 50 | CW30



*klasse 30 | QT05

SBST

S30 | S40 | S45 | S50 | S60



*klasse 25 | S40



*klasse 15 | S30



*klasse 40 | S50



OPTIONS

profielmes / half arrow profile



*klasse 30 | CW10



*klasse 30 | S40



Altijd kwaliteit door onze vakmensen

leder product wordt zorgvuldig gemaakt



Quality by our craftsmen

Every product is carefully made

Our quality is your succes!

PUINBAKKEN - SKELETON BUCKETS



*klasse 15 | CW05

PBS (PBH = heavy duty)

CW00 | CW05 | CW10 | CW20/30 | CW40 | CW45

QT00 | QT05 | QT10 | QT20/30 | QT40 | QT45



*klasse 45 | CW30



*klasse 30 | QT05



PBST

S30 | S40 | S45 | S50 | S60



*klasse 25 | S40



*klasse 10 | S30



*klasse 40 | S50



PBK

CW00 | CW05 | CW10 | CW20/30 | CW40 | CW45

QT00 | QT05 | QT10 | QT20/30 | QT40 | QT45



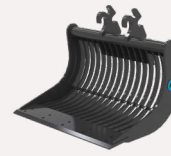
*klasse 55 | CW40



*klasse 45 | CW30



*klasse 25 | QT05



PBR

CW00 | CW05 | CW10 | CW20/30 | CW40 | CW45

QT00 | QT05 | QT10 | QT20/30 | QT40 | QT45



*klasse 45 | QT30



*klasse 65 | CW45



STRT

CW00 | CW05 | CW10 | CW20/30 | CW40
QT00 | QT05 | QT10 | QT20/30 | QT40



*klasse 30 | CW05



*klasse 45 | CW30



Verstevigde varianten beschikbaar
Heavy duty variations available

OPTIONS

profielmes | tanden
half arrow profile | teeth



*klasse 50 | CW30 ESCO



*klasse 15 | CW05



*CW30 CAT



*klasse 30 | CW10

KANTELBAKKEN - TILTABLE DITCH CLEANING BUCKETS

KB

CW00 | CW05 | CW10 | CW20/30 | CW40 | CW45



*klasse 15 | CW05



*klasse 25 | CW05



*klasse 45 | CW30



OPTIONS

profielmes / half arrow profile



*klasse 15 | CW05



ROOI RIEKEN / HARKEN - LAND RAKES

RR

CW00 | CW05 | CW10 | CW20/30 | CW40 | CW45
S30 | S40 | S45 | S50 | S60



*klasse 15 | CW05



*klasse 35 | CW10



*klasse 35 | S45



HARK

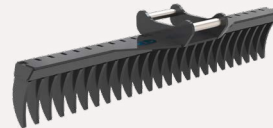
CW00 | CW05 | CW10 | CW20/30 | CW40 | CW45
S30 | S40 | S45 | S50 | S60



*klasse 15 | CW05



*klasse 10 | CW00



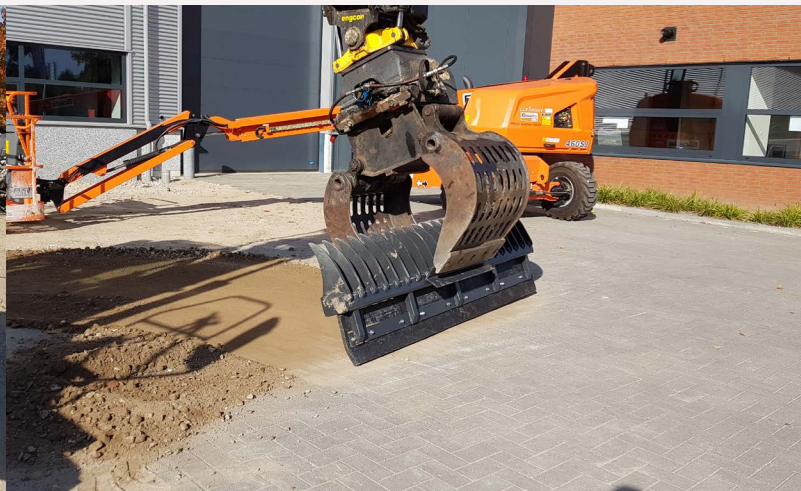
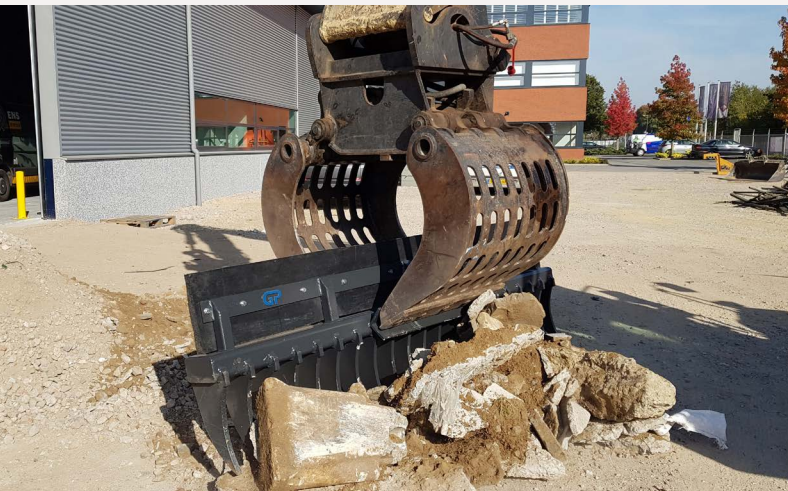
*klasse 25 | S40



*klasse 45 | CW30

HARK (combi)

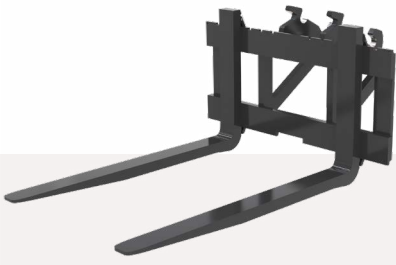
Te gebruiken met grijper / For use with sorting grab



PALLETFRAMES - PALLET FORKS

PF

CW00 | CW05 | CW10 | CW20/30 | CW40 | CW45
QT00 | QT05 | QT10 | QT20/30 | QT40 | QT45
S30 | S40 | S45 | S50 | S60



*CW05



*QT10



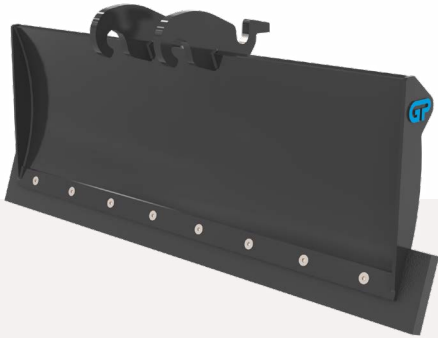
*S60



DICHTSCHUIVEN - DOZER BLADES

DS

CW00 | CW05 | CW10 | CW20/30 | CW40 | CW45
S30 | S40 | S45 | S50 | S60



*CW05



*CW10

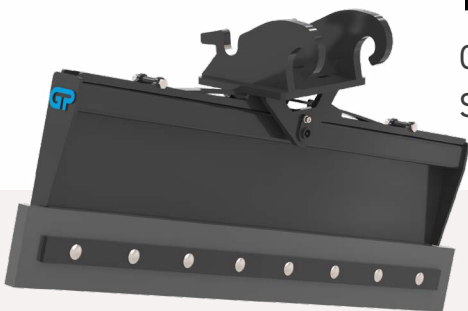


*S40

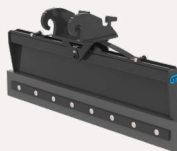


KDS

CW00 | CW05 | CW10
S30 | S40 | S45



*CW05



Our quality is your succes!

RIPPERS



*CW05

RIPPER

CW00 | CW05 | CW10 | CW20/30 | CW40 | CW45
S30 | S40 | S45 | S50 | S60



*S45



*CW40



*CW05

GR

CW00 | CW05 | CW10 | CW20/30 | CW40 | CW45
S30 | S40 | S45 | S50 | S60



*CW10



*S45



Steeds meer!

We werken iedere dag aan de uitbreiding van ons assortiment.



More and more!

We work on expanding our product range every day.

GRIJPERS - SORTING GRABS



*CW30

GP-D (met rotatie / with rotation)

CW00 | CW05 | CW10 | CW20/30 | CW40 | CW45

S30 | S40 | S45 | S50 | S60



*S60



*CW30

GP-ZD (zonder rotatie / without rotation)

CW00 | CW05 | CW10 | CW20/30 | CW40 | CW45

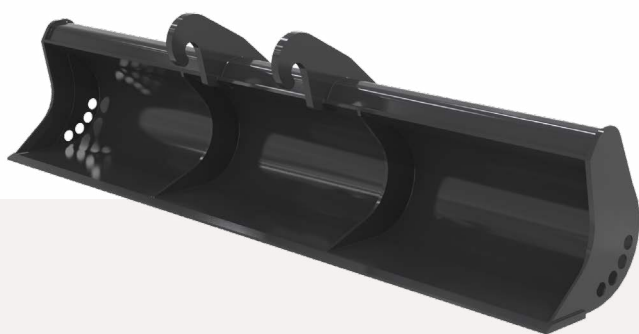
S30 | S40 | S45 | S50 | S60



*S60



GRACHTENBAKKEN - CANAL BUCKETS



*CW30

GB

CW00 | CW05 | CW10 | CW20/30 | CW40 | CW45

S30 | S40 | S45 | S50 | S60



*CW05 (met sleuven - with slots)



*CW10 (geperforeerd - perforated)

VERDICHTINGSWIELEN - COMPACTOR WHEELS



*CW10 - 12T

VDW

CW00 | CW05 | CW10 | CW20/30 | CW40 | CW45
S30 | S40 | S45 | S50 | S60



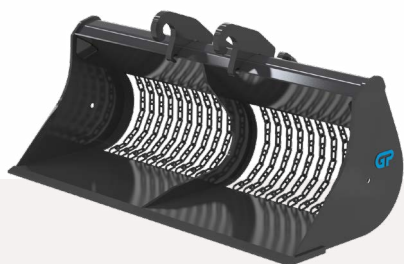
*CW40 - 30T



*S60 - 30T



KETTINGBAKKEN - CHAIN BUCKETS



*CW10

SBS

CW00 | CW05 | CW10 | CW20/30 | CW40 | CW45
S30 | S40 | S45 | S50 | S60



*CW30



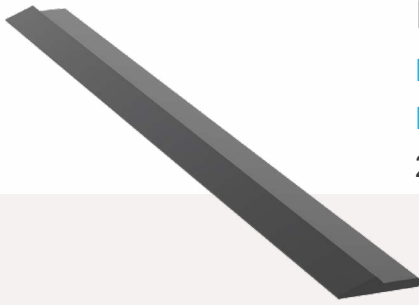
*S40



SLIJTDELEN - WEARPARTS

HALVE PIJL MESSEN - HALF ARROW BLADES & MOEDERMESSEN - STANDARD BLADES

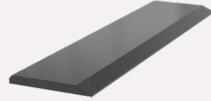
Halve pijl mes / Half arrow blade (mm) 21x101 | 32x151 | 32x203 | 57x254
Moedermes / Standard blade (mm) 12x110 | 16x110 | 16x150 | 20x150 |
20x200 | 25x150 | 25x250 | 30x250 | 30x300 | 35x300 | 40x300



*halve pijl mes / half arrow blade



*zijde / side



*moedermes / standard



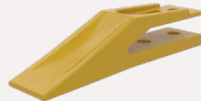
*zijde moedermes / side standard

TANDEN - TEETH

Opschroef / Bolt-on | ESCO | CAT



*ESCO Ultralok



*Opschroef / bolt-on



*CAT J-series



*ESCO Super V

LASTHAKEN - LOAD HOOKS

1T | 1,5T | 4T | 7,5T | 12,5T



*1,5T



*1T



*4T



*7,5T



*12,5T

SPIEKAPPEN - WEDGE PROTECTORS

CW10 | CW20/30 | CW40 | CW45



*CW30



*CW10

KOPPLATEN - TOP PLATES

CW00 | CW05 | CW10 | CW20/30 | CW40 | CW45
QT00 | QT05 | QT10 | QT20/30 | QT40
S30 | S40 | S45 | S50 | S60



*CW05



*combi



*S variant



*(vast / direct)

ADAPTERPLATEN - ADAPTER PLATES

CW00 | CW05 | CW10 | CW20/30 | CW40 | CW45
QT00 | QT05 | QT10 | QT20/30 | QT40
S30 | S40 | S45 | S50 | S60



*standaard CW & QT / standard



*hamerplaat / hammer *S variant



*SW03



*Systeem 2000



*Volvo systeem

GRIJPERBEUGELS - GRAB BRACKETS

CW00 | CW05 | CW10 | CW20/30 | CW40 | CW45
QT00 | QT05 | QT10 | QT20/30 | QT40
S30 | S40 | S45 | S50 | S60



*CW10



*CW30

